

Media Relations:

Mitsubishi Electric Turkey Official PR Agency

Inomist Communication Consultancy

Sibel Selvi Arslantürk sibel@inomist.com

+90 216 639 60 16 / +90 533 441 80 33

This text is the English translation of the official Turkish version of the applicable press release. It has been prepared solely as a reference and ease of use. Please refer to the original Turkish text for details and/or attributes. In case of any incongruity, original Turkish version shall prevail

01 February 2019

The New SCADA Software Platform for Industry 4.0 and IIoT Applications

MAPS 4, Mitsubishi Electric's new SCADA solution cuts on time spent on project development and integration

Mitsubishi Electric, one of the leading actors of the world in the fields of electrics, electronics and automation developed MAPS 4, the new SCADA solution for Industry 4.0 and IIoT applications. Explaining the technical specifications of this new innovative solution by the brand, Mitsubishi Electric Turkey Factory Automation Systems OEM Business Development Senior Manager Tolga Bizel also drew attention to the fact that the product makes it possible to extend connectivity options, add user tools and increase the scope of its built-in functionality. Stating that MAPS 4 provides a full life-cycle planning, management and integration platform for all types of applications from manufacturing to infrastructure, Bizel emphasised that the new software reduces the time taken for project development and integration.



Incorporating the smart factories of Industry 4.0 era with rapid integration, productivity, flexibility and efficiency, Mitsubishi Electric provides flexibility during handling, automating, controlling, verifying and auditing processes with MAPS 4 process suit, the newest SCADA solution built on a strong Service Oriented Architecture. Emphasising that the

product provides a full life-cycle planning, management and integration platform for applications from manufacturing to infrastructure, **Mitsubishi Electric Turkey Factory Automation Systems OEM Business Development Senior Manager Tolga Bizel** told us about the technical specifications of MAPS 4.

Configuration in an intuitive and easy-to-use environment



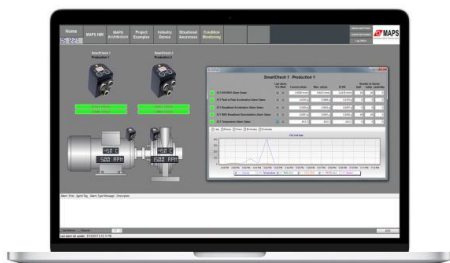
Drawing attention to the aspect that there is also a dedicated HMI version available for machine builders and customers that require a more lightweight SCADA solution for localised control and visualisation tasks with MAPS 4, Tolga Bizel said "The new SCADA software suit has features that can add value to daily activities

such as MS Excel bulk-configuration tool. This tool for example enables Excel users to create a large part of a SCADA project, for instance Tag databases, logging, and alarm definitions, in an intuitive and easy to use environment. The user also benefits from the many copy/paste and mass-configuration functionalities in Excel.

Fast and optimal integration process

Stating that There are also extensive libraries for Mitsubishi Electric factory automation hardware and more than 100 other PLC and RTU drivers onboard to make routine configuration quicker and more efficient, Bizel said; "Use of pre-configured Object Template models as well as easy creation of new, individual models also support a fast, optimised integration process. Project changes can be deployed centrally providing a single point of engineering that reduces costs and increases usability."

It can be stored locally, on cloud or privately



Stating that secure data sharing and cross platform connectivity are both high priorities for many process management applications, Bizel said; "our SCADA solution which can be hosted locally, in cloud or privately can also be connected seamlessly to other third-party cloud hosted environments. Developed around popular industry standards such as OPC DA

and UA, MQTT and BACNet, the entire software suite is effectively Industry 4.0 and IIoT ready. It combines the compatibility advantages of built-in OPC UA and DA support, with the openness of an HTML5 web client. Secure web connections provide easy browser-based monitoring and operation for PCs and mobile devices."

Considerable reduction in project engineering and development costs.

Stating that the scope and scalability of the product mean that project engineering and development costs for both large and small applications can be significantly reduced, Bizele also emphasised that the amount of physical programming required is kept low, even when the complexity of the application increases. Saying that this has benefits for the end user and the system integrators as both can become more competitive as a result, Bizele stated that the investment is also better secured because the solution remains very flexible for updates and new projects.

About Mitsubishi Electric Corporation

With over 95 years of experience in providing reliable, high-quality products, Mitsubishi Electric Corporation is a recognized world leader in the manufacture, marketing and sales of electrical and electronic equipment used in information processing and communications, space development and satellite communications, consumer electronics, industrial technology, energy, transportation and building equipment. Embracing the spirit of its corporate statement, Changes for the Better, and its environmental statement, Eco Changes, Mitsubishi Electric endeavors to be a global, leading green company, enriching society with technology. The company recorded consolidated group sales of 4,444.4 billion yen (in accordance with IFRS; US\$ 41.9 billion) in the fiscal year ended March 31, 2018. For more information visit: www.MitsubishiElectric.com*

**At an exchange rate of 106 yen to the US dollar, the rate given by the Tokyo Foreign Exchange Market on March 31, 2018.*

About Mitsubishi Electric's Activities in Turkey

Mitsubishi Electric's main fields of activity in Turkey are; air conditioning systems, factory automation systems, advanced robotics, CNC mechatronic systems, elevator and escalator systems and visual data systems. Mitsubishi Electric, which established a room air conditioner development and manufacturing company in April 2016 in Turkey, began production in Manisa factory in December 2017. Mitsubishi Electric, the producer of Turksat 4A and 4B satellites, which contributes to the communication and publishing infrastructure of Turkey and neighboring countries, is notable for its satellites as well as the automation technology used in the Marmaray project. For more information; tr.mitsubishielectric.com

About Mitsubishi Electric Turkey Factory Automation Systems

Mitsubishi Electric Turkey Factory Automation Systems; provide added value in terms of rapid integration, productivity, flexibility and productivity to the leading industrial companies in Turkey in various fields such as automotive, food, packaging, metal and PVC processing machines. The new industry, also called "Industry 4.0", responds with e-F@ctory, i.e. the digital factory concept. For more information; tr3a.mitsubishielectric.com

Mitsubishi Electric Turkey Social Media Accounts

Facebook <https://www.facebook.com/MitsubishiElectricTurkeyA.S/>
Linkedin <https://www.linkedin.com/company/mitsubishi-electric-turkey/>
Instagram <https://www.instagram.com/mitsubishielectricturkey/>
Twitter https://twitter.com/MitsubishiE_TR
Google+ <https://plus.google.com/u/1/10553602082233872440?hl=tr>

Hashtags for Social Media

@MitsubishiE_TR



#MitsubishiElectric
#MitsubishiElectricTurkey

for a greener tomorrow

